

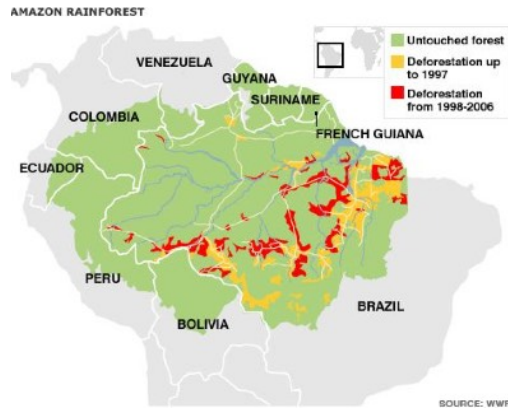


Memory Geogger

Define deforestation

Give 4 causes of deforestation

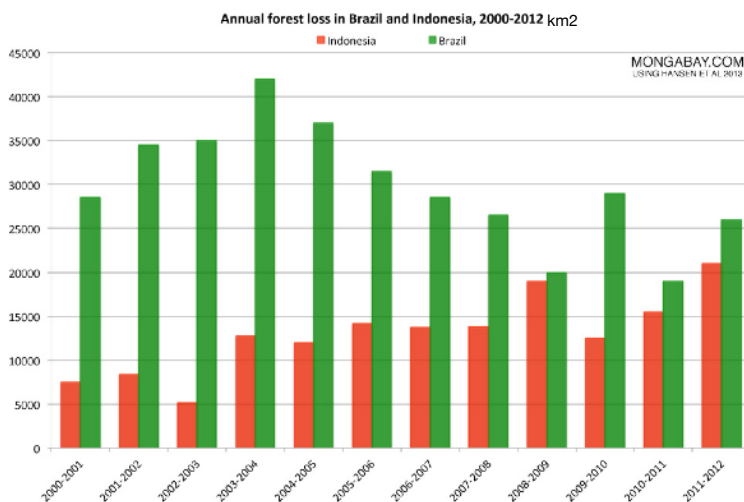
Describe the distribution of deforestation in the Amazon.



Using the photograph below, explain how vegetation has adapted to the climate in the tropical rainforest.



Compare and contrast rates of deforestation in Brazil and Indonesia.





Memory Geogger

Define deforestation

Deforestation is the removal of trees and change in the way land is used.

Describe the distribution of deforestation in the Amazon.

Deforestation has mainly occurred in the south and east of the Amazon Rainforest. Deforestation up to 1997 was mainly on the edge of the rainforest in these areas. This has moved further into the rainforest between 1998 and 2006. Deforestation has occurred mainly along major transport routes such as the TransAmazon Highway. A significant amount of deforestation has happened close to coastal cities.

Give 4 causes of deforestation

- logging
- mining / mineral extraction
- transportation
- subsistence farming
- commercial farming
- cattle ranching
- settlement development
- energy development (HEP)

Using the photograph below, explain how vegetation has adapted to the climate in the tropical rainforest.

Plants have thick, waxy leaves to protect them from the sun. They have pointed tips called drip-tips that channel the water to a point so it runs off – that way the weight of the water doesn't damage the plant. The leaf has holes so wind does not damage the plant.

Compare and contrast rates of deforestation in Brazil and Indonesia.

Over time rates of deforestation have fluctuated in Brazil, though there is a declining trend, however in Indonesia, over time it has increased. For each year the rate of deforestation is always higher in Brazil than in Indonesia. The highest rate of deforestation in Brazil was 42000km² in 2003/4 whereas the highest rate in Indonesia was 21000km² in 2011/12.